

Photomicrograph of Sample

500
microns

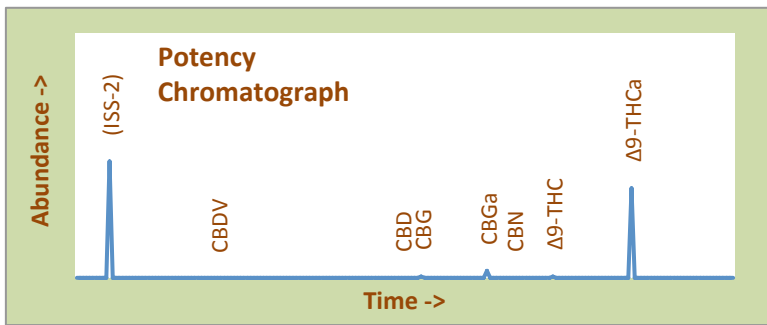


Arise High Desert Relief

Certificate of Analysis

Assay Date:	August 18, 2020	BioTrack ID:	5706 1076 4981 4409	Foreign Material Inspection Passed Inspection
Material:	Cured Flower		Flower Lot (Arise)	
Method:	HPLC			
Internal ID:	HDR 044		<i>Sample collected by client</i>	
Moisture:	2.26%			

α-Tocopherol:	Not Performed
----------------------	---------------



Abundant Terpenes			
1) a-Pinene	**	11) Terpinolene	**
2) Camphene	**	12) Linalool	**
3) b-Pinene	**	13) Isopulegol	**
4) Myrcene	**	14) Geraniol	**
5) 3-Carene	**	15) b-Caryophyllene	**
6) a-Terpinene	**	16) a-Humulene	**
7) d-Limonene	**	17) Nerolidol	**
8) p-Cymene	**	18) Guaiol	**
9) Ocimene	**	19) a-Bisabolol	**
10) g-Terpinene	**		
Terpene Total	(not performed)		

Cannabinoid	mg/gram	Method
Δ9-THC	3.6	hplc
Δ9-THCa	267.6	hplc
CBN	0.00	hplc
CBD	<0.1	hplc
CBDa	<0.1	hplc
Total CBG	25.1	hplc
Δ8-THC	<0.1	hplc
Total	296.3	

Total THC = 23.8% <i>(Δ9 Activation = 1.5%)</i>
Total CBD <0.1% <i>CBD Activation >99%</i>

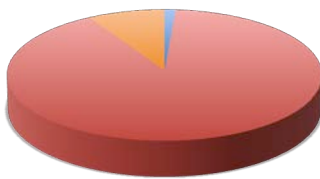
Terpene Profile

(analysis not performed)

TerpType®: (profile not performed)

Residual Solvents (ppm), bold-red if failed*
(residuals test not performed)

*Δ9-THC, Δ9-THCa and Total CBD are reported to BioTrack. 'np' = test not performed



- Δ9-THC
- Δ9-THCa
- CBN
- CBD
- CBDa
- Total CBG
- Δ8-THC

Form Copyright R. Richins 2020

Microbial Screen (cfu/gram)	Observed Rate
- Total aerobic plate count:	<1000 Passes
- Total yeast and mold count:	683 Passes
- Bile-tolerant gram negative:	<10 Passes
- <i>E. Coli</i> :	nd Passes
- <i>Salmonella</i> spp.:	nd Passes
- <i>Mycotoxins (B1, B2, G1, G2, OA)</i> :	<1 ppb Passes

Sample Passes Microbial Screen

Limits of Detection (LODs) for all reported analytes can be found at: <http://riograndeanalytics.net/Sensitivity.html>



* Residual limits can be found at: <http://riograndeanalytics.net/Residuals.html>.

Approved on August 21, 2020
Results are non-transferable
and valid for 30 days.

Barry Dungan
Barry Dungan - lab manager

