

Photomicrograph of Sample

500
microns



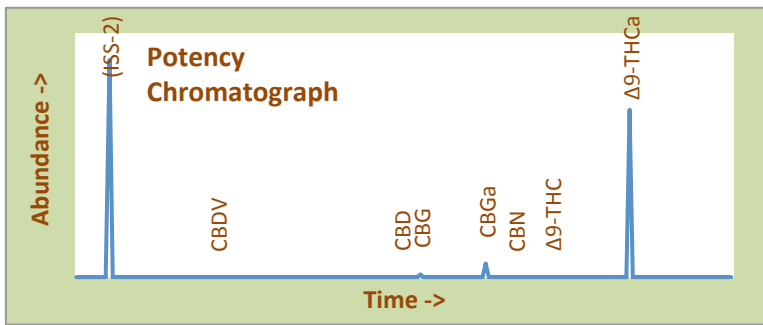
Platinum Delights High Desert Relief

Certificate of Analysis

Assay Date: August 18, 2020 **BioTrack ID:** 0795 1517 7902 6333
Material: Cured Flower
Method: HPLC Flower Lot (Platinum Delights)
Internal ID: HDR 037 *Sample collected by client*
Moisture: 2.69%
α-Tocopherol: Not Performed

Foreign Material Inspection

Passed Inspection



Abundant Terpenes

- | | | | |
|-----------------|----|---------------------|----|
| 1) a-Pinene | ** | 11) Terpinolene | ** |
| 2) Camphene | ** | 12) Linalool | ** |
| 3) b-Pinene | ** | 13) Isopulegol | ** |
| 4) Myrcene | ** | 14) Geraniol | ** |
| 5) 3-Carene | ** | 15) b-Caryophyllene | ** |
| 6) a-Terpinene | ** | 16) a-Humulene | ** |
| 7) d-Limonene | ** | 17) Nerolidol | ** |
| 8) p-Cymene | ** | 18) Guaiol | ** |
| 9) Ocimene | ** | 19) a-Bisabolol | ** |
| 10) g-Terpinene | ** | | |

Terpene Total (not performed)

Cannabinoid	mg/gram	Method
Δ9-THC	0.62	hplc
Δ9-THCa	241.3	hplc
CBN	0.00	hplc
CBD	<0.1	hplc
CBDa	<0.1	hplc
Total CBG	24.3	hplc
Δ8-THC	<0.1	hplc
Total	266.1	

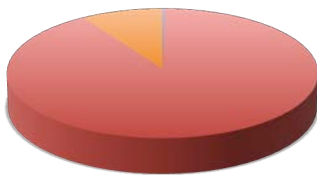
Total THC = 21.2%
(Δ9 Activation = 0.2%)

Total CBD <0.1%
CBD Activation >99%

Terpene Profile

(analysis not performed)

TerpType®: (profile not performed)



- Δ9-THC
- Δ9-THCa
- CBN
- CBD
- CBDa
- Total CBG
- Δ8-THC

Form Copyright R. Richins 2020

Microbial Screen (cfu/gram)	Observed Rate
- Total aerobic plate count:	<1000 Passes
- Total yeast and mold count:	<10 Passes
- Bile-tolerant gram negative:	<10 Passes
- E. Coli:	nd Passes
- Salmonella spp.:	nd Passes
- Mycotoxins (B1, B2, G1, G2, OA):	<1 ppb Passes

Sample Passes Microbial Screen

Limits of Detection (LODs) for all reported analytes can be found at: <http://riograndeanalytics.net/Sensitivity.html>

Residual Solvents (ppm), bold-red if failed*

(residuals test not performed)

* Residual limits can be found at: <http://riograndeanalytics.net/Residuals.html>



Approved on August 21, 2020
Results are non-transferable and valid for 30 days.

Barry Dungan
Barry Dungan - lab manager

