

Photomicrograph of Sample

500
microns



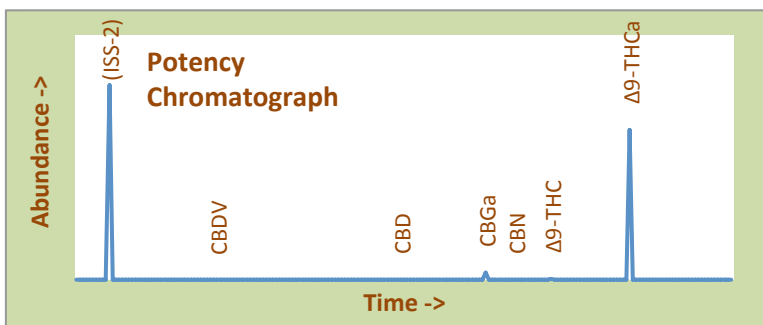
Raspberry Diesel High Desert Relief

Certificate of Analysis

Assay Date:	August 4, 2020	BioTrack ID:	0513 4959 1150 7584
Material:	Cured Flower		Flower Lot (Raspberry Diesel)
Method:	HPLC		Sample collected by client
Internal ID:	HDR 017		
Moisture:	5.52%		
α-Tocopherol:	Not Performed		

Foreign Material Inspection

Passed Inspection



Abundant Terpenes

1) a-Pinene	0.03%	11) Terpinolene	<0.01%
2) Camphene	<0.01%	12) Linalool	0.03%
3) b-Pinene	0.06%	13) Isopulegol	<0.01%
4) Myrcene	0.11%	14) Geraniol	0.03%
5) 3-Carene	<0.01%	15) b-Caryophyllene	0.43%
6) a-Terpinene	<0.01%	16) a-Humulene	0.12%
7) d-Limonene	0.29%	17) Nerolidol	0.40%
8) p-Cymene	<0.01%	18) Guaiol	0.23%
9) Ocimene	<0.01%	19) a-Bisabolol	0.30%
10) g-Terpinene	<0.01%		

Terpene Total

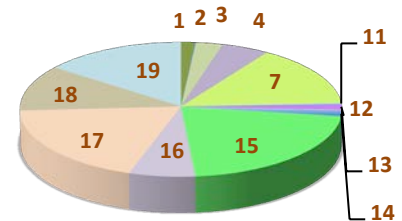
2.05%

Cannabinoid	mg/gram	Method
Δ9-THC	0.93	hplc
Δ9-THCa	208.7	hplc
CBN	0.00	hplc
CBD	<0.1	hplc
CBDa	<0.1	hplc
Total CBG	10.4	hplc
Δ8-THC	<0.1	hplc
Total	220.0	

Total THC = 18.4%
(Δ9 Activation = 0.5%)

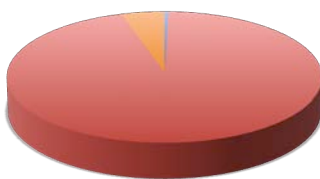
Total CBD <0.1%
CBD Activation >99%

Terpene Profile



TerpType®: Car + Limonene

*Δ9-THC, Δ9-THCa and Total CBD are reported to BioTrack. 'np' = test not performed



- Δ9-THC
- Δ9-THCa
- CBN
- CBD
- CBDa
- Total CBG
- Δ8-THC

Form Copyright R. Richins 2020

Microbial Screen (cfu/gram)	Observed Rate
- Total aerobic plate count:	<1000 Passes
- Total yeast and mold count:	<10 Passes
- Bile-tolerant gram negative:	<10 Passes
- E. Coli:	nd Passes
- Salmonella spp.:	nd Passes
- Mycotoxins (B1, B2, G1, G2, OA):	<1 ppb Passes

Sample Passes Microbial Screen

Residual Solvents (ppm), bold-red if failed*

* Residual limits can be found at: <http://riograndeanalytics.net/Residuals.html>.

Approved on August 07, 2020
Results are non-transferable
and valid for 30 days.

Barry Dungan
Barry Dungan - lab manager

Limits of Detection (LODs) for all reported analytes can be found at: <http://riograndeanalytics.net/Sensitivity.html>