

Photomicrograph of Sample

500  
microns



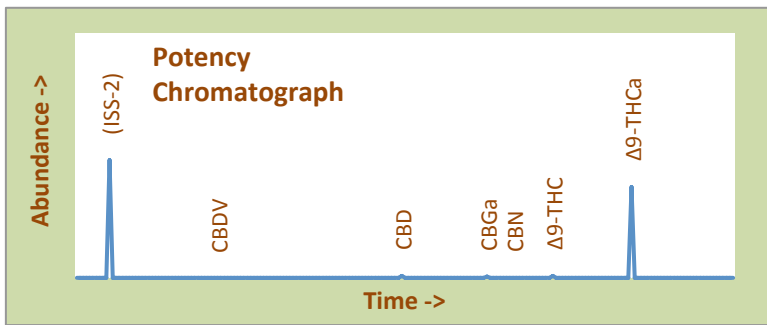
# Blue Dream High Desert Relief

## Certificate of Analysis

<b>Assay Date:</b>	August 31, 2020	<b>BioTrack ID:</b>	2155 0581 4916 7727
<b>Material:</b>	Cured Flower		Flower Lot (Blue Dream)
<b>Method:</b>	HPLC		Sample collected by client
<b>Internal ID:</b>	HDR 073		
<b>Moisture:</b>	7.34%		
<b>α-Tocopherol:</b>	Not Performed		

**Foreign Material Inspection**

**Passed Inspection**



**Abundant Terpenes**

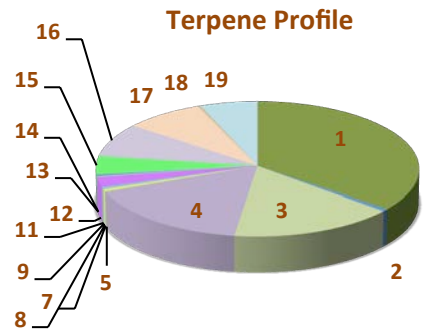
1) a-Pinene	1.33%	11) Terpinolene	0.01%
2) Camphene	0.02%	12) Linalool	0.09%
3) b-Pinene	0.57%	13) Isopulegol	0.01%
4) Myrcene	0.63%	14) Geraniol	0.01%
5) 3-Carene	<0.01%	15) b-Caryophyllene	0.15%
6) a-Terpinene	<0.01%	16) a-Humulene	0.27%
7) d-Limonene	0.02%	17) Nerolidol	0.29%
8) p-Cymene	<0.01%	18) Guaiol	0.01%
9) Ocimene	0.01%	19) a-Bisabolol	0.20%
10) g-Terpinene	<0.01%		

**Terpene Total 3.63%**

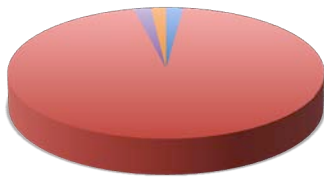
Cannabinoid	mg/gram	Method
Δ9-THC	5.2	hplc
Δ9-THCa	264.4	hplc
CBN	0.00	hplc
CBD	5.2	hplc
CBDa	<0.1	hplc
Total CBG	4.6	hplc
Δ8-THC	<0.1	hplc
<b>Total</b>	<b>279.4</b>	

**Total THC = 23.7%**  
(Δ9 Activation = 2.2%)

**Total CBD = 0.515%**  
CBD Activation >99%



**TerpType®: Pinenes**



- Δ9-THC
- Δ9-THCa
- CBN
- CBD
- CBDa
- Total CBG
- Δ8-THC

Form Copyright R. Richins 2020

Microbial Screen (cfu/gram)	Observed Rate
- Total aerobic plate count:	<1000 <b>Passes</b>
- Total yeast and mold count:	<10 <b>Passes</b>
- Bile-tolerant gram negative:	<10 <b>Passes</b>
- <i>E. Coli</i> :	nd <b>Passes</b>
- <i>Salmonella</i> spp.:	nd <b>Passes</b>
- <i>Mycotoxins (B1, B2, G1, G2, OA)</i> :	<1 ppb <b>Passes</b>

**Sample Passes Microbial Screen**

**Residual Solvents (ppm), bold-red if failed\***

(residuals test not performed)

\* Residual limits can be found at: <http://riograndeanalytics.net/Residuals.html>.



Approved on September 03,  
Results are non-transferable  
and valid for 30 days.

*Barry Dungan*  
Barry Dungan - lab manager

Limits of Detection (LODs) for all reported analytes can be found at: <http://riograndeanalytics.net/Sensitivity.html>