

Photomicrograph of Sample

500
microns



Blue Lime Pie High Desert Relief

Certificate of Analysis

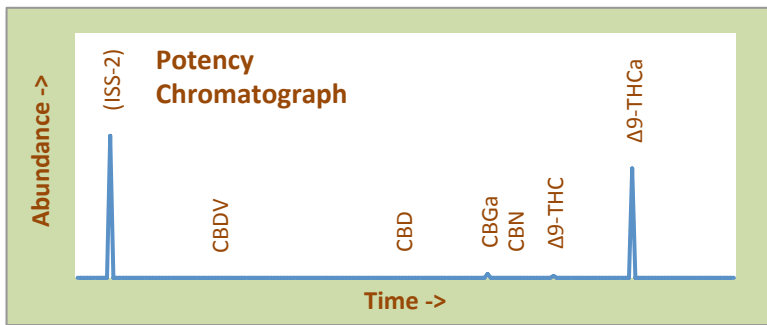
Assay Date: August 31, 2020
Material: Cured Flower
Method: HPLC
Internal ID: HDR 071
Moisture: 5.24%
α-Tocopherol: Not Performed

BioTrack ID:

4522 8206 9977 1226
 Flower Lot (Blue Lime Pie)
Sample collected by client

Foreign Material Inspection

Passed Inspection



Abundant Terpenes

1) a-Pinene	0.03%	11) Terpinolene	<0.01%
2) Camphene	0.01%	12) Linalool	0.26%
3) b-Pinene	0.06%	13) Isopulegol	<0.01%
4) Myrcene	0.02%	14) Geraniol	0.04%
5) 3-Carene	<0.01%	15) b-Caryophyllene	0.30%
6) a-Terpinene	<0.01%	16) a-Humulene	0.62%
7) d-Limonene	0.26%	17) Nerolidol	0.44%
8) p-Cymene	<0.01%	18) Guaiol	0.02%
9) Ocimene	<0.01%	19) a-Bisabolol	0.16%
10) g-Terpinene	<0.01%		

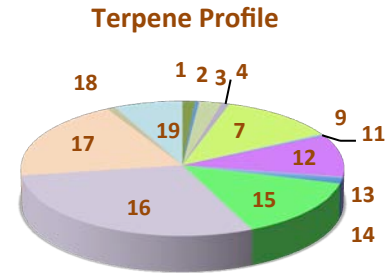
Terpene Total

2.21%

Cannabinoid	mg/gram	Method
Δ9-THC	6.1	hplc
Δ9-THCa	301.4	hplc
CBN	0.00	hplc
CBD	<0.1	hplc
CBDa	<0.1	hplc
Total CBG	11.5	hplc
Δ8-THC	<0.1	hplc
Total	318.9	

Total THC = 27%
 (Δ9 Activation = 2.2%)

Total CBD <0.1%
 CBD Activation >99%



TerpType®: a-Humulene

Residual Solvents (ppm), bold-red if failed*

(residuals test not performed)



- Δ9-THC
- Δ9-THCa
- CBN
- CBD
- CBDa
- Total CBG
- Δ8-THC

Form Copyright R. Richins 2020

Microbial Screen

	Observed Rate (cfu/gram)	
- Total aerobic plate count:	<1000	Passes
- Total yeast and mold count:	<10	Passes
- Bile-tolerant gram negative:	<10	Passes
- <i>E. Coli</i> :	nd	Passes
- <i>Salmonella</i> spp.:	nd	Passes
- <i>Mycotoxins</i> (B1, B2, G1, G2, OA):	<1 ppb	Passes

Sample Passes Microbial Screen

Limits of Detection (LODs) for all reported analytes can be found at: <http://riograndeanalytics.net/Sensitivity.html>

* Residual limits can be found at: <http://riograndeanalytics.net/Residuals.html>.



Approved on September 03,
 Results are non-transferable
 and valid for 30 days.

Barry Dungan
 Barry Dungan - lab manager

