

Photomicrograph of Sample

500  
microns



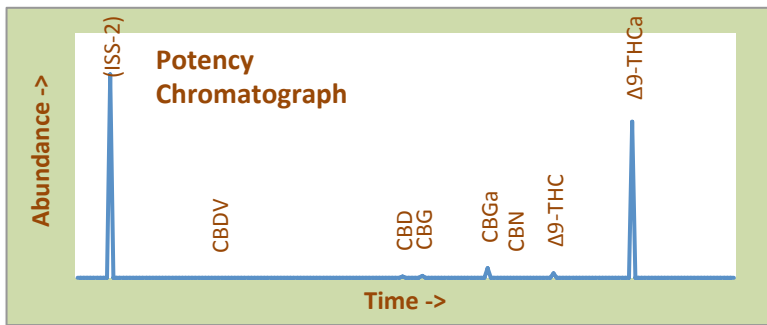
# Mimosa High Desert Relief

## Certificate of Analysis

|                      |                 |                     |                                   |
|----------------------|-----------------|---------------------|-----------------------------------|
| <b>Assay Date:</b>   | August 31, 2020 | <b>BioTrack ID:</b> | 6819 3458 4244 7709               |
| <b>Material:</b>     | Cured Flower    |                     | Flower Lot (Mimosa)               |
| <b>Method:</b>       | HPLC            |                     | <i>Sample collected by client</i> |
| <b>Internal ID:</b>  | HDR 059         |                     |                                   |
| <b>Moisture:</b>     | 6.95%           |                     |                                   |
| <b>α-Tocopherol:</b> | Not Performed   |                     |                                   |

Foreign Material Inspection

**Passed Inspection**



### Abundant Terpenes

|                 |        |                     |        |
|-----------------|--------|---------------------|--------|
| 1) a-Pinene     | 0.06%  | 11) Terpinolene     | <0.01% |
| 2) Camphene     | 0.01%  | 12) Linalool        | 0.06%  |
| 3) b-Pinene     | 0.05%  | 13) Isopulegol      | <0.01% |
| 4) Myrcene      | 0.03%  | 14) Geraniol        | 0.01%  |
| 5) 3-Carene     | <0.01% | 15) b-Caryophyllene | 1.02%  |
| 6) a-Terpinene  | <0.01% | 16) a-Humulene      | 0.27%  |
| 7) d-Limonene   | 0.15%  | 17) Nerolidol       | 0.47%  |
| 8) p-Cymene     | 0.05%  | 18) Guaiol          | 0.01%  |
| 9) Ocimene      | <0.01% | 19) a-Bisabolol     | 0.12%  |
| 10) g-Terpinene | <0.01% |                     |        |

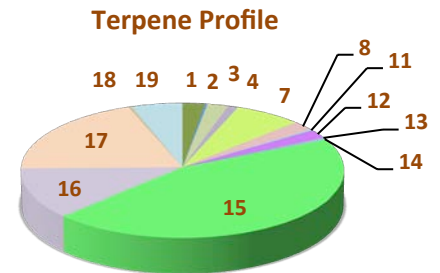
Terpene Total

2.30%

| Cannabinoid  | mg/gram      | Method |
|--------------|--------------|--------|
| Δ9-THC       | 6.2          | hplc   |
| Δ9-THCa      | 222.9        | hplc   |
| CBN          | 0.00         | hplc   |
| CBD          | 1.5          | hplc   |
| CBDa         | <0.1         | hplc   |
| Total CBG    | 16.3         | hplc   |
| Δ8-THC       | <0.1         | hplc   |
| <b>Total</b> | <b>246.9</b> |        |

**Total THC = 20.2%**  
(Δ9 Activation = 3%)

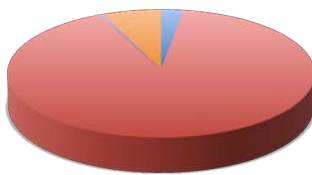
**Total CBD = 0.146%**  
CBD Activation >99%



TerpType®: Car + Limonene

Residual Solvents (ppm), **bold-red if failed\***

(residuals test not performed)



- Δ9-THC
- Δ9-THCa
- CBN
- CBD
- CBDa
- Total CBG
- Δ8-THC

Form Copyright R. Richins 2020

### Microbial Screen Observed Rate (cfu/gram)

|   |        |        |
|---|--------|--------|
| - Total aerobic plate count:              | <1000  | Passes |
| - Total yeast and mold count:             | <10    | Passes |
| - Bile-tolerant gram negative:            | <10    | Passes |
| - <i>E. Coli</i> :                        | nd     | Passes |
| - <i>Salmonella</i> spp.:                 | nd     | Passes |
| - <i>Mycotoxins</i> (B1, B2, G1, G2, OA): | <1 ppb | Passes |

**Sample Passes Microbial Screen**

Limits of Detection (LODs) for all reported analytes can be found at: <http://riograndeanalytics.net/Sensitivity.html>

\* Residual limits can be found at: <http://riograndeanalytics.net/Residuals.html>.



Approved on September 03,  
Results are non-transferable  
and valid for 30 days.

