

Photomicrograph of Sample

500  
microns

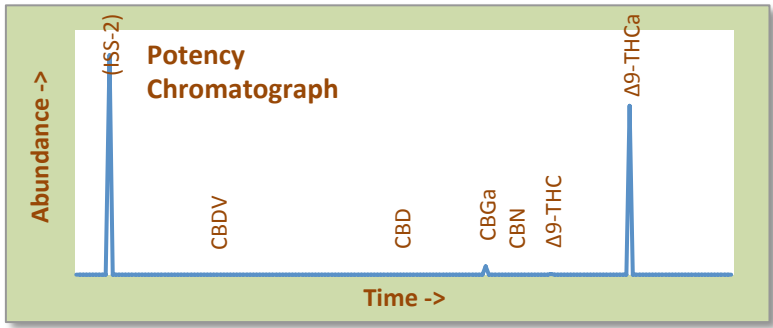


# Raspberry Diesel High Desert Relief

Certificate of Analysis

**Assay Date:** August 18, 2020 **BioTrack ID:** 8455 4015 4220 3319  
**Material:** Cured Flower **Flower Lot (Raspberry Diesel)**  
**Method:** HPLC *Sample collected by client*  
**Internal ID:** HDR 036  
**Moisture:** 1.65%  
**α-Tocopherol:** Not Performed

**Foreign Material Inspection**  
**Passed Inspection**



**Abundant Terpenes**

1) a-Pinene	**	11) Terpinolene	**
2) Camphene	**	12) Linalool	**
3) b-Pinene	**	13) Isopulegol	**
4) Myrcene	**	14) Geraniol	**
5) 3-Carene	**	15) b-Caryophyllene	**
6) a-Terpinene	**	16) a-Humulene	**
7) d-Limonene	**	17) Nerolidol	**
8) p-Cymene	**	18) Guaiol	**
9) Ocimene	**	19) a-Bisabolol	**
10) g-Terpinene	**		

**Terpene Total (not performed)**

Cannabinoid	mg/gram	Method
Δ9-THC	1.0	hplc
Δ9-THCa	247.0	hplc
CBN	0.00	hplc
CBD	<0.1	hplc
CBDa	<0.1	hplc
Total CBG	12.0	hplc
Δ8-THC	<0.1	hplc
<b>Total</b>	<b>260.1</b>	

**Total THC = 21.8%**  
*(Δ9 Activation = 0.4%)*

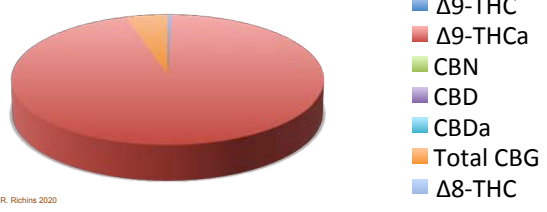
**Total CBD <0.1%**  
*CBD Activation >99%*

**Terpene Profile**

(analysis not performed)

**TerpType®: (profile not performed)**

\*Δ9-THC, Δ9-THCa and Total CBD are reported to BioTrack. 'np' = test not performed



**Residual Solvents (ppm), bold-red if failed\***

(residuals test not performed)

**Microbial Screen (cfu/gram) Observed Rate**

- Total aerobic plate count:	<1000	Passes
- Total yeast and mold count:	<10	Passes
- Bile-tolerant gram negative:	<10	Passes
- E. Coli:	nd	Passes
- Salmonella spp.:	nd	Passes
- Mycotoxins (B1, B2, G1, G2, OA):	<1 ppb	Passes

**Sample Passes Microbial Screen**

Limits of Detection (LODs) for all reported analytes can be found at: <http://riograndeanalytics.net/Sensitivity.html>



\* Residual limits can be found at: <http://riograndeanalytics.net/Residuals.html>.

Approved on August 21, 2020  
 Results are non-transferable and valid for 30 days.  
 Barry Dungan  
 Rio Grande Analytics  
 Las Cruces, NM  
 Barry Dungan - lab manager