

Photomicrograph of Sample

500  
microns

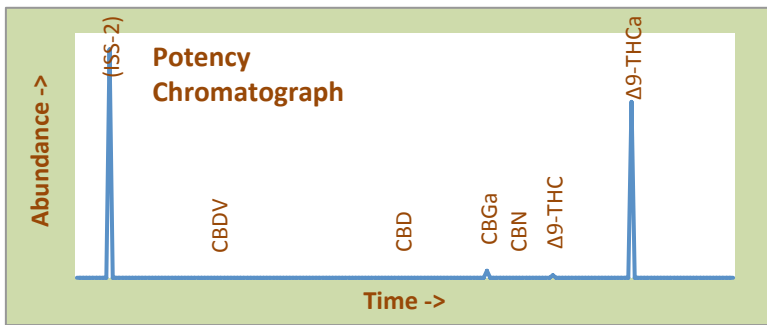


# Raspberry Diesel High Desert Relief

## Certificate of Analysis

<b>Assay Date:</b>	August 31, 2020	<b>BioTrack ID:</b>	4794 6672 6011 4883	<b>Foreign Material Inspection</b>  <b>Passed Inspection</b>
<b>Material:</b>	Cured Flower		Flower Lot (Raspberry Diesel)	
<b>Method:</b>	HPLC		Sample collected by client	
<b>Internal ID:</b>	HDR 053			
<b>Moisture:</b>	6.03%			

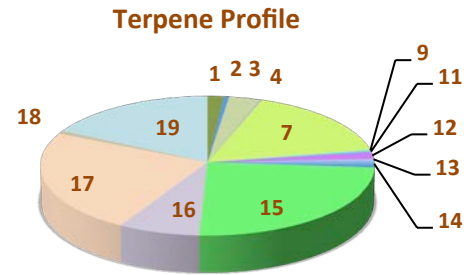
<b>α-Tocopherol:</b>	Not Performed
----------------------	---------------



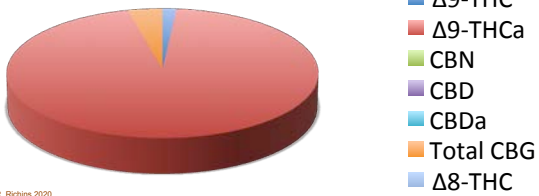
Abundant Terpenes			
1) a-Pinene	0.04%	11) Terpinolene	0.01%
2) Camphene	0.01%	12) Linalool	0.05%
3) b-Pinene	0.08%	13) Isopulegol	0.01%
4) Myrcene	<0.01%	14) Geraniol	0.05%
5) 3-Carene	<0.01%	15) b-Caryophyllene	0.60%
6) a-Terpinene	<0.01%	16) a-Humulene	0.18%
7) d-Limonene	0.39%	17) Nerolidol	0.60%
8) p-Cymene	<0.01%	18) Guaiol	0.02%
9) Ocimene	<0.01%	19) a-Bisabolol	0.43%
10) g-Terpinene	<0.01%		
<b>Terpene Total</b>			<b>2.45%</b>

Cannabinoid	mg/gram	Method
Δ9-THC	4.0	hplc
Δ9-THCa	245.0	hplc
CBN	0.00	hplc
CBD	<0.1	hplc
CBDa	<0.1	hplc
Total CBG	10.0	hplc
Δ8-THC	<0.1	hplc
<b>Total</b>	<b>259.0</b>	

<b>Total THC = 21.9%</b> (Δ9 Activation = 1.8%)
<b>Total CBD &lt;0.1%</b> #DIV/0!



TerpType®: Car + Limonene



Form Copyright R. Richins 2020

Residual Solvents (ppm), bold-red if failed*
(residuals test not performed)

Microbial Screen (cfu/gram)	Observed Rate
- Total aerobic plate count:	<1000 Passes
- Total yeast and mold count:	<10 Passes
- Bile-tolerant gram negative:	<10 Passes
- E. Coli:	nd Passes
- Salmonella spp.:	nd Passes
- Mycotoxins (B1, B2, G1, G2, OA):	<1 ppb Passes

**Sample Passes Microbial Screen**

Limits of Detection (LODs) for all reported analytes can be found at: <http://riograndeanalytics.net/Sensitivity.html>



\* Residual limits can be found at: <http://riograndeanalytics.net/Residuals.html>.

Approved on September 03,  
Results are non-transferable  
and valid for 30 days.

Barry Dungan - lab manager