

Photomicrograph of Sample

500  
microns



# Arise High Desert Relief

## Certificate of Analysis

**Assay Date:** August 31, 2020  
**Material:** Cured Flower  
**Method:** HPLC  
**Internal ID:** HDR 078  
**Moisture:** 5.15%  
**α-Tocopherol:** Not Performed

**BioTrack ID:**

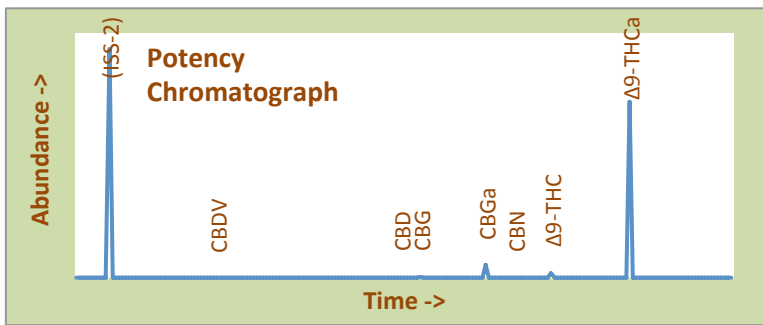
8225 3413 6380 7068

Flower Lot (Arise)

Sample collected by client

**Foreign Material Inspection**

**Passed Inspection**



### Abundant Terpenes

1) a-Pinene	0.45%	11) Terpinolene	0.15%
2) Camphene	0.01%	12) Linalool	<0.01%
3) b-Pinene	0.27%	13) Isopulegol	0.01%
4) Myrcene	0.19%	14) Geraniol	0.01%
5) 3-Carene	0.03%	15) b-Caryophyllene	0.26%
6) a-Terpinene	0.01%	16) a-Humulene	0.09%
7) d-Limonene	0.03%	17) Nerolidol	0.11%
8) p-Cymene	0.08%	18) Guaiol	0.01%
9) Ocimene	0.01%	19) a-Bisabolol	0.10%
10) g-Terpinene	0.01%		

**Terpene Total**

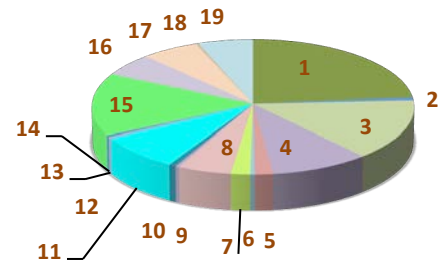
**1.84%**

Cannabinoid	mg/gram	Method
Δ9-THC	6.9	hplc
Δ9-THCa	263.0	hplc
CBN	0.00	hplc
CBD	0.50	hplc
CBDa	<0.1	hplc
Total CBG	20.6	hplc
Δ8-THC	<0.1	hplc
<b>Total</b>	<b>291.0</b>	

**Total THC = 23.8%**  
(Δ9 Activation = 2.9%)

**Total CBD = 0.051%**  
CBD Activation >99%

### Terpene Profile



**TerpType®: Pinenes**



- Δ9-THC
- Δ9-THCa
- CBN
- CBD
- CBDa
- Total CBG
- Δ8-THC

Form Copyright R. Richins 2020

### Microbial Screen (cfu/gram)

**Observed Rate**

- Total aerobic plate count:	<1000	Passes
- Total yeast and mold count:	<10	Passes
- Bile-tolerant gram negative:	<10	Passes
- <i>E. Coli</i> :	nd	Passes
- <i>Salmonella</i> spp.:	nd	Passes
- <i>Mycotoxins</i> (B1, B2, G1, G2, OA):	<1 ppb	Passes

**Sample Passes Microbial Screen**

Limits of Detection (LODs) for all reported analytes can be found at: <http://riograndeanalytics.net/Sensitivity.html>

### Residual Solvents (ppm), bold-red if failed\*

(residuals test not performed)

\* Residual limits can be found at: <http://riograndeanalytics.net/Residuals.html>.



Approved on September 03,  
Results are non-transferable  
and valid for 30 days.

*Barry Dungan*  
Barry Dungan - lab manager

