



**Assay Date:** August 31, 2020 **BioTrack ID:**

**Material:** Cured Flower 2505 3048 8309 3765

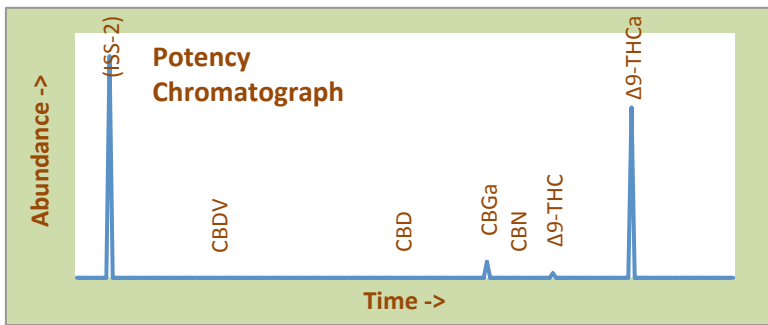
**Method:** HPLC Flower Lot (Arise)

**Internal ID:** HDR 077 *Sample collected by client*

**Moisture:** 8.08%

**α-Tocopherol:** Not Performed

**Foreign Material Inspection**  
**Passed Inspection**



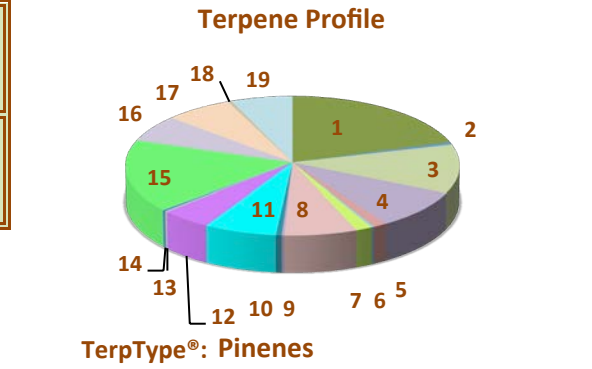
**Abundant Terpenes**

1) a-Pinene	0.49%	11) Terpinolene	0.16%
2) Camphene	0.01%	12) Linalool	0.12%
3) b-Pinene	0.27%	13) Isopulegol	0.01%
4) Myrcene	0.22%	14) Geraniol	0.01%
5) 3-Carene	0.03%	15) b-Caryophyllene	0.37%
6) a-Terpinene	0.01%	16) a-Humulene	0.13%
7) d-Limonene	0.03%	17) Nerolidol	0.16%
8) p-Cymene	0.14%	18) Guaiol	0.01%
9) Ocimene	0.01%	19) a-Bisabolol	0.14%
10) g-Terpinene	0.01%		
<b>Terpene Total</b>		<b>2.31%</b>	

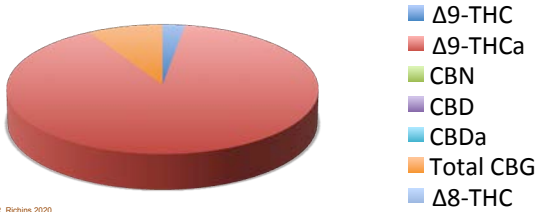
Cannabinoid	mg/gram	Method
Δ9-THC	7.0	hplc
Δ9-THCa	248.0	hplc
CBN	0.00	hplc
CBD	<0.1	hplc
CBDa	<0.1	hplc
Total CBG	23.2	hplc
Δ8-THC	<0.1	hplc
<b>Total</b>	<b>278.2</b>	

**Total THC = 22.4%**  
(Δ9 Activation = 3.1%)

**Total CBD <0.1%**  
CBD Activation >99%



\*Δ9-THC, Δ9-THCa and Total CBD are reported to BioTrack. 'np' = test not performed



**Residual Solvents (ppm), bold-red if failed\***

(residuals test not performed)

**Microbial Screen (cfu/gram) Observed Rate**

- Total aerobic plate count:	<1000	Passes
- Total yeast and mold count:	<10	Passes
- Bile-tolerant gram negative:	<10	Passes
- E. Coli:	nd	Passes
- Salmonella spp.:	nd	Passes
- Mycotoxins (B1, B2, G1, G2, OA):	<1 ppb	Passes

**Sample Passes Microbial Screen**

Limits of Detection (LODs) for all reported analytes can be found at: <http://riograndeanalytics.net/Sensitivity.html>



\* Residual limits can be found at: <http://riograndeanalytics.net/Residuals.html>.

Approved on September 03,  
Results are non-transferable  
and valid for 30 days.

*Barry Dungan*

Barry Dungan - lab manager

Rio Grande Analytics  
Las Cruces, NM