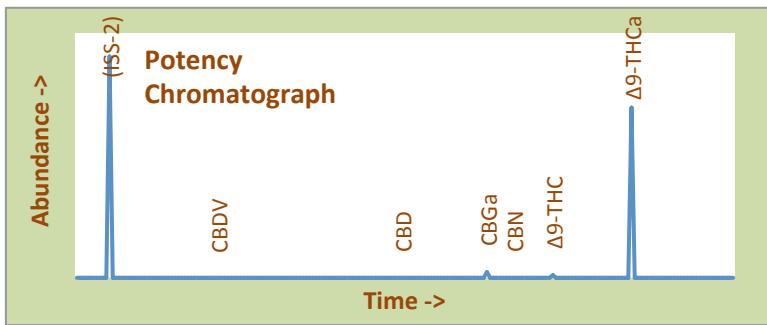




# Raspberry Diesel High Desert Relief

## Certificate of Analysis

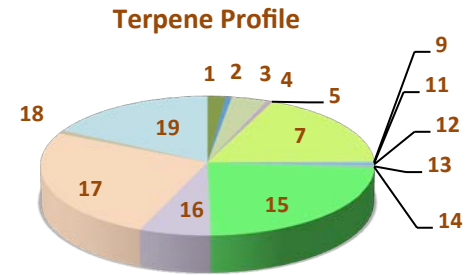
<b>Assay Date:</b>	August 31, 2020	<b>BioTrack ID:</b>	7493 1588 9755 0750	<b>Foreign Material Inspection</b>  <b>Passed Inspection</b>
<b>Material:</b>	Cured Flower		Flower Lot (Raspberry Diesel)	
<b>Method:</b>	HPLC		<i>Sample collected by client</i>	
<b>Internal ID:</b>	HDR 052			
<b>Moisture:</b>	6.81%			
<b>α-Tocopherol:</b>	Not Performed			



Abundant Terpenes			
1) a-Pinene	0.05%	11) Terpinolene	0.01%
2) Camphene	0.02%	12) Linalool	0.01%
3) b-Pinene	0.10%	13) Isopulegol	0.01%
4) Myrcene	0.01%	14) Geraniol	<0.01%
5) 3-Carene	<0.01%	15) b-Caryophyllene	0.59%
6) a-Terpinene	<0.01%	16) a-Humulene	0.16%
7) d-Limonene	0.43%	17) Nerolidol	0.67%
8) p-Cymene	<0.01%	18) Guaiol	0.02%
9) Ocimene	<0.01%	19) a-Bisabolol	0.43%
10) g-Terpinene	<0.01%		
<b>Terpene Total</b>			<b>2.50%</b>

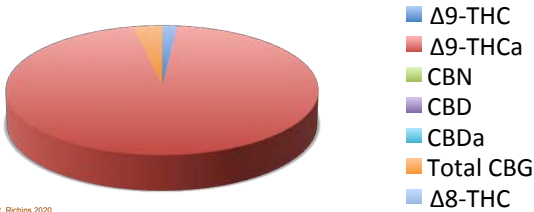
Cannabinoid	mg/gram	Method
Δ9-THC	4.1	hplc
Δ9-THCa	238.0	hplc
CBN	0.00	hplc
CBD	<0.1	hplc
CBDa	<0.1	hplc
Total CBG	8.0	hplc
Δ8-THC	<0.1	hplc
<b>Total</b>	<b>250.1</b>	

<b>Total THC = 21.3%</b> <i>(Δ9 Activation = 1.9%)</i>
<b>Total CBD &lt;0.1%</b> <i>#DIV/0!</i>



**TerpType®: Car + Limonene**

\*Δ9-THC, Δ9-THCa and Total CBD are reported to BioTrack. 'np' = test not performed



Residual Solvents (ppm), bold-red if failed*
(residuals test not performed)

Microbial Screen (cfu/gram)	Observed Rate
- Total aerobic plate count:	<1000 Passes
- Total yeast and mold count:	<10 Passes
- Bile-tolerant gram negative:	<10 Passes
- E. Coli:	nd Passes
- Salmonella spp.:	nd Passes
- Mycotoxins (B1, B2, G1, G2, OA):	<1 ppb Passes

**Sample Passes Microbial Screen**

Limits of Detection (LODs) for all reported analytes can be found at: <http://riograndeanalytics.net/Sensitivity.html>



\* Residual limits can be found at: <http://riograndeanalytics.net/Residuals.html>.

Approved on September 03,  
Results are non-transferable  
and valid for 30 days.

Barry Dungan - lab manager