

Photomicrograph of Sample

500
microns



Creme Rose High Desert Relief

Certificate of Analysis

Assay Date: November 2, 2020 **BioTrack ID:**

Material: Cured Flower 3372 0256 6635 2648

Method: HPLC Flower Lot (Creme Rose)

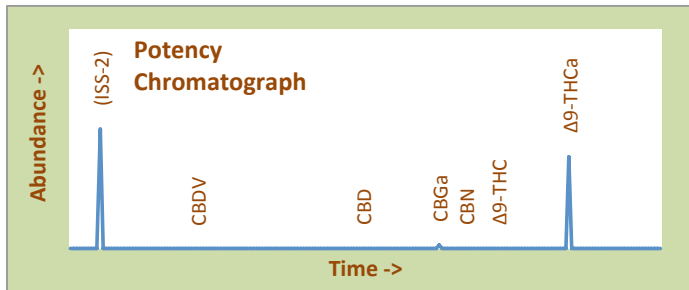
Internal ID: HDR 127 *Sample collected by client*

Moisture: 3.27%

α-Tocopherol: Not Performed

Foreign Material Inspection

Passed Inspection



Abundant Terpenes

1) a-Pinene	**	11) Terpinolene	**
2) Camphene	**	12) Linalool	**
3) b-Pinene	**	13) Isopulegol	**
4) Myrcene	**	14) Geraniol	**
5) 3-Carene	**	15) b-Caryophyllene	**
6) a-Terpinene	**	16) a-Humulene	**
7) d-Limonene	**	17) Nerolidol	**
8) p-Cymene	**	18) Guaiol	**
9) Ocimene	**	19) a-Bisabolol	**
10) g-Terpinene	**		

Terpene Total (not performed)

Cannabinoid	mg/gram	Method
Δ9-THC	0.83	hplc
Δ9-THCa	312.7	hplc
CBN	0.00	hplc
CBD	<0.1	hplc
CBDa	<0.1	hplc
Total CBG	12.7	hplc
Δ8-THC	<0.1	hplc
Total	326.1	

Total THC = 27.5%
(Δ9 Activation = 0.3%)

Total CBD <0.1%
CBD Activation >99%

Terpene Profile

(analysis not performed)

*Δ9-THC, Δ9-THCa and Total CBD are reported to BioTrack. 'np' = test not performed



- Δ9-THC
- Δ9-THCa
- CBN
- CBD
- CBDa
- Total CBG
- Δ8-THC

Form Copyright R. Richins 2020

Microbial Screen (cfu/gram)	Observed Rate
- Total aerobic plate count:	<1000 Passes
- Total yeast and mold count:	<10 Passes
- Bile-tolerant gram negative:	<10 Passes
- <i>E. Coli</i> :	nd Passes
- <i>Salmonella</i> spp.:	nd Passes
- <i>Mycotoxins (B1, B2, G1, G2, OA)</i> :	<1 ppb Passes

Sample Passes Microbial Screen

Limits of Detection (LODs) for all reported analytes can be found at: <http://riograndeanalytics.net/Sensitivity.html>

TerpType®: (profile not performed)

Residual Solvents (ppm), bold-red if failed*

(residuals test not performed)

* Residual limits can be found at: <http://riograndeanalytics.net/Residuals.html>



Approved on November 05,
Results are non-transferable
and valid for 30 days.

Barry Dungan
Barry Dungan - lab manager

