

Photomicrograph of Sample

500  
microns



# Gorilla Wreck #4

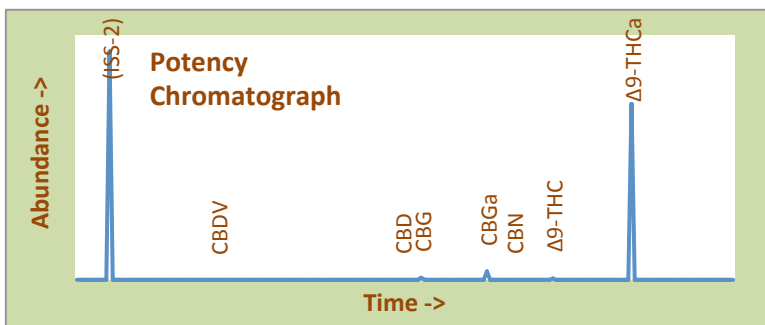
## High Desert Relief

## Certificate of Analysis

**Assay Date:** August 18, 2020 **BioTrack ID:** 4409 6808 9047 6549  
**Material:** Cured Flower **Flower Lot (Gorilla Wreck #4)**  
**Method:** HPLC *Sample collected by client*  
**Internal ID:** HDR 042  
**Moisture:** 2.05%  
**α-Tocopherol:** Not Performed

**Foreign Material Inspection**

**Passed Inspection**



### Abundant Terpenes

1) a-Pinene	**	11) Terpinolene	**
2) Camphene	**	12) Linalool	**
3) b-Pinene	**	13) Isopulegol	**
4) Myrcene	**	14) Geraniol	**
5) 3-Carene	**	15) b-Caryophyllene	**
6) a-Terpinene	**	16) a-Humulene	**
7) d-Limonene	**	17) Nerolidol	**
8) p-Cymene	**	18) Guaiol	**
9) Ocimene	**	19) a-Bisabolol	**
10) g-Terpinene	**		

**Terpene Total (not performed)**

Cannabinoid	mg/gram	Method
Δ9-THC	1.7	hplc
Δ9-THCa	247.4	hplc
CBN	0.00	hplc
CBD	<0.1	hplc
CBDa	<0.1	hplc
Total CBG	14.7	hplc
Δ8-THC	<0.1	hplc
<b>Total</b>	<b>263.8</b>	

**Total THC = 21.9%**  
(Δ9 Activation = 0.7%)

**Total CBD <0.1%**  
CBD Activation >99%

### Terpene Profile

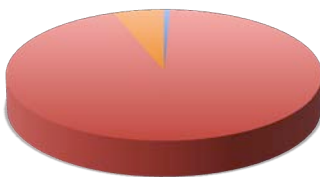
(analysis not performed)

**TerpType®: (profile not performed)**

### Residual Solvents (ppm), bold-red if failed\*

(residuals test not performed)

\*Δ9-THC, Δ9-THCa and Total CBD are reported to BioTrack. 'np' = test not performed



- Δ9-THC
- Δ9-THCa
- CBN
- CBD
- CBDa
- Total CBG
- Δ8-THC

Form Copyright R. Richins 2020

Microbial Screen (cfu/gram)	Observed Rate
- Total aerobic plate count:	<1000 Passes
- Total yeast and mold count:	<10 Passes
- Bile-tolerant gram negative:	<10 Passes
- E. Coli:	nd Passes
- Salmonella spp.:	nd Passes
- Mycotoxins (B1, B2, G1, G2, OA):	<1 ppb Passes

**Sample Passes Microbial Screen**

Limits of Detection (LODs) for all reported analytes can be found at: <http://riograndeanalytics.net/Sensitivity.html>

\* Residual limits can be found at: <http://riograndeanalytics.net/Residuals.html>.



Approved on August 21, 2020  
Results are non-transferable  
and valid for 30 days.

*Barry Dungan*  
Rio Grande Analytics  
Las Cruces, NM  
Barry Dungan - lab manager