

Photomicrograph of Sample

500  
microns



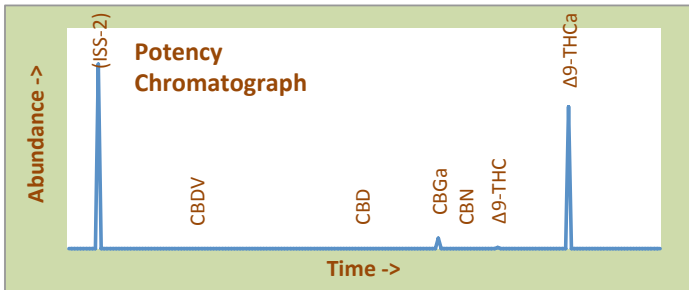
# Mimosa High Desert Relief

## Certificate of Analysis

**Assay Date:** November 2, 2020 **BioTrack ID:**  
**Material:** Cured Flower 5112 4824 5913 5761  
**Method:** HPLC Flower Lot (Mimosa)  
**Internal ID:** HDR 117 *Sample collected by client*  
**Moisture:** 3.32%  
**α-Tocopherol:** Not Performed

### Foreign Material Inspection

**Passed Inspection**



### Abundant Terpenes

1) a-Pinene	**	11) Terpinolene	**
2) Camphene	**	12) Linalool	**
3) b-Pinene	**	13) Isopulegol	**
4) Myrcene	**	14) Geraniol	**
5) 3-Carene	**	15) b-Caryophyllene	**
6) a-Terpinene	**	16) a-Humulene	**
7) d-Limonene	**	17) Nerolidol	**
8) p-Cymene	**	18) Guaiol	**
9) Ocimene	**	19) a-Bisabolol	**
10) g-Terpinene	**		

**Terpene Total (not performed)**

Cannabinoid	mg/gram	Method
Δ9-THC	2.0	hplc
Δ9-THCa	226.5	hplc
CBN	0.00	hplc
CBD	<0.1	hplc
CBDa	<0.1	hplc
Total CBG	16.2	hplc
Δ8-THC	<0.1	hplc
<b>Total</b>	<b>244.7</b>	

**Total THC = 20.1%**  
(Δ9 Activation = 1%)

**Total CBD <0.1%**  
CBD Activation >99%

### Terpene Profile

(analysis not performed)

\*Δ9-THC, Δ9-THCa and Total CBD are reported to BioTrack. 'np' = test not performed



- Δ9-THC
- Δ9-THCa
- CBN
- CBD
- CBDa
- Total CBG
- Δ8-THC

Form Copyright R. Riches 2020

Microbial Screen (cfu/gram)	Observed Rate
- Total aerobic plate count:	<1000 <b>Passes</b>
- Total yeast and mold count:	<10 <b>Passes</b>
- Bile-tolerant gram negative:	<10 <b>Passes</b>
- <i>E. Coli</i> :	nd <b>Passes</b>
- <i>Salmonella</i> spp.:	nd <b>Passes</b>
- <i>Mycotoxins (B1, B2, G1, G2, OA)</i> :	<1 ppb <b>Passes</b>

### Sample Passes Microbial Screen

Limits of Detection (LODs) for all reported analytes can be found at: <http://riograndeanalytics.net/Sensitivity.html>

### TerpType®: (profile not performed)

### Residual Solvents (ppm), bold-red if failed\*



\* Residual limits can be found at: <http://riograndeanalytics.net/Residuals.html>

Approved on November 05,  
Results are non-transferable  
and valid for 30 days.

*Barry Dungan*  
Barry Dungan - lab manager

