

Photomicrograph of Sample

500
microns



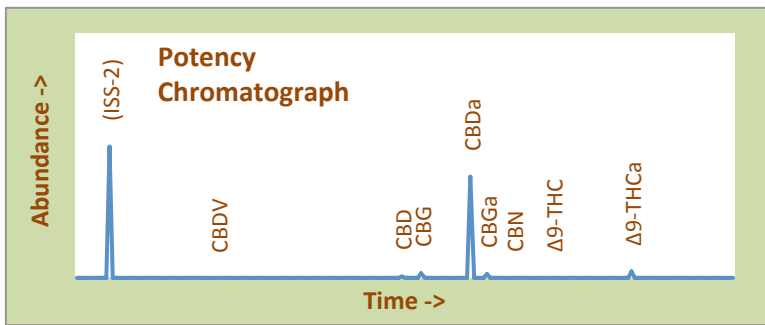
Ringo's Gift High Desert Relief

Certificate of Analysis

| | | | |
|----------------------|-----------------|---------------------|-----------------------------------|
| Assay Date: | August 31, 2020 | BioTrack ID: | 7488 6242 6836 0390 |
| Material: | Cured Flower | | Flower Lot (Ringo's Gift) |
| Method: | HPLC | | <i>Sample collected by client</i> |
| Internal ID: | HDR 050 | | |
| Moisture: | 5.86% | | |
| α-Tocopherol: | Not Performed | | |

Foreign Material Inspection

Passed Inspection



Abundant Terpenes

| | | | |
|-----------------|--------|---------------------|--------|
| 1) a-Pinene | 0.66% | 11) Terpinolene | 0.01% |
| 2) Camphene | 0.02% | 12) Linalool | 0.02% |
| 3) b-Pinene | 0.20% | 13) Isopulegol | 0.01% |
| 4) Myrcene | 0.51% | 14) Geraniol | <0.01% |
| 5) 3-Carene | <0.01% | 15) b-Caryophyllene | 0.26% |
| 6) a-Terpinene | <0.01% | 16) a-Humulene | 0.01% |
| 7) d-Limonene | 0.01% | 17) Nerolidol | 0.07% |
| 8) p-Cymene | <0.01% | 18) Guaiol | 0.06% |
| 9) Ocimene | <0.01% | 19) a-Bisabolol | 0.17% |
| 10) g-Terpinene | <0.01% | | |

Terpene Total

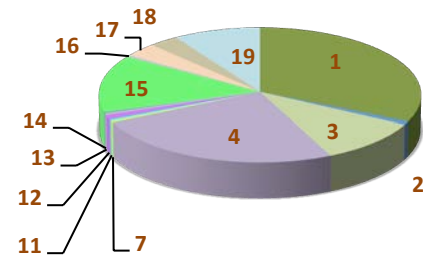
1.99%

| Cannabinoid | mg/gram | Method |
|--------------|--------------|--------|
| Δ9-THC | <0.1 | hplc |
| Δ9-THCa | 8.8 | hplc |
| CBN | 0.00 | hplc |
| CBD | 2.1 | hplc |
| CBDa | 133.8 | hplc |
| Total CBG | 12.1 | hplc |
| Δ8-THC | <0.1 | hplc |
| Total | 156.8 | |

Total THC = 0.775%
(Δ9 Activation = 0%)

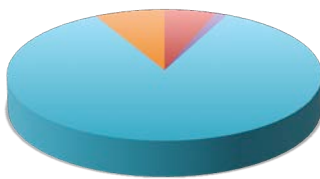
Total CBD = 11.9%
(CBD Activation = 1.7%)

Terpene Profile



TerpType®: Pinenes

*Δ9-THC, Δ9-THCa and Total CBD are reported to BioTrack. 'np' = test not performed



- Δ9-THC
- Δ9-THCa
- CBN
- CBD
- CBDa
- Total CBG
- Δ8-THC

Form Copyright R. Richins 2020

| Microbial Screen (cfu/gram) | Observed Rate |
|--|----------------------|
| - Total aerobic plate count: | <1000 Passes |
| - Total yeast and mold count: | <10 Passes |
| - Bile-tolerant gram negative: | <10 Passes |
| - <i>E. Coli</i> : | nd Passes |
| - <i>Salmonella</i> spp.: | nd Passes |
| - <i>Mycotoxins (B1, B2, G1, G2, OA)</i> : | <1 ppb Passes |

Sample Passes Microbial Screen

Limits of Detection (LODs) for all reported analytes can be found at: <http://riograndeanalytics.net/Sensitivity.html>

Residual Solvents (ppm), bold-red if failed*

(residuals test not performed)

* Residual limits can be found at: <http://riograndeanalytics.net/Residuals.html>.



Approved on September 03,
Results are non-transferable
and valid for 30 days.

Barry Dungan
Barry Dungan - lab manager

