

Photomicrograph of Sample

500
microns



Raspberry Diesel High Desert Relief

Certificate of Analysis

Assay Date: August 31, 2020

BioTrack ID:

Material: Cured Flower

9412 2383 4702 5527

Method: HPLC

Flower Lot (Raspberry Diesel)

Internal ID: HDR 051

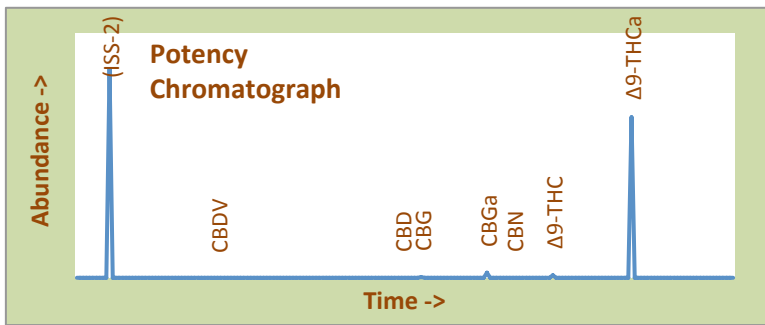
Sample collected by client

Moisture: 6.04%

α-Tocopherol: Not Performed

Foreign Material Inspection

Passed Inspection



Abundant Terpenes

1) a-Pinene	0.05%	11) Terpinolene	0.01%
2) Camphene	0.02%	12) Linalool	0.04%
3) b-Pinene	0.09%	13) Isopulegol	0.01%
4) Myrcene	0.01%	14) Geraniol	0.05%
5) 3-Carene	<0.01%	15) b-Caryophyllene	0.32%
6) a-Terpinene	<0.01%	16) a-Humulene	0.16%
7) d-Limonene	0.43%	17) Nerolidol	0.58%
8) p-Cymene	<0.01%	18) Guaiol	0.02%
9) Ocimene	<0.01%	19) a-Bisabolol	0.40%
10) g-Terpinene	<0.01%		

Terpene Total

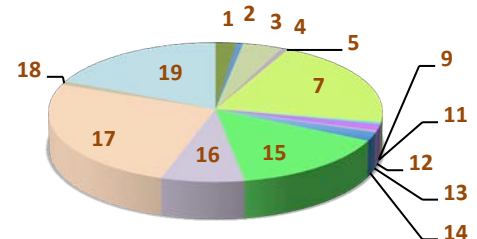
2.19%

Cannabinoid	mg/gram	Method
Δ9-THC	3.7	hplc
Δ9-THCa	234.3	hplc
CBN	0.00	hplc
CBD	<0.1	hplc
CBDa	<0.1	hplc
Total CBG	8.4	hplc
Δ8-THC	<0.1	hplc
Total	246.4	

Total THC = 20.9%
(Δ9 Activation = 1.7%)

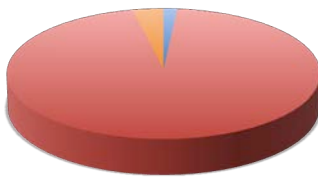
Total CBD <0.1%
#DIV/0!

Terpene Profile



TerpType®: Car + Limonene

*Δ9-THC, Δ9-THCa and Total CBD are reported to BioTrack. 'np' = test not performed



- Δ9-THC
- Δ9-THCa
- CBN
- CBD
- CBDa
- Total CBG
- Δ8-THC

Form Copyright R. Richins 2020

Microbial Screen (cfu/gram)

Observed Rate

- Total aerobic plate count:	<1000	Passes
- Total yeast and mold count:	<10	Passes
- Bile-tolerant gram negative:	<10	Passes
- E. Coli:	nd	Passes
- Salmonella spp.:	nd	Passes
- Mycotoxins (B1, B2, G1, G2, OA):	<1 ppb	Passes

Sample Passes Microbial Screen

Residual Solvents (ppm), bold-red if failed*

(residuals test not performed)

* Residual limits can be found at: <http://riograndeanalytics.net/Residuals.html>.



Approved on September 03,
Results are non-transferable
and valid for 30 days.

Barry Dungan
Rio Grande Analytics
Las Cruces, NM
Barry Dungan - lab manager

Limits of Detection (LODs) for all reported analytes can be found at: <http://riograndeanalytics.net/Sensitivity.html>